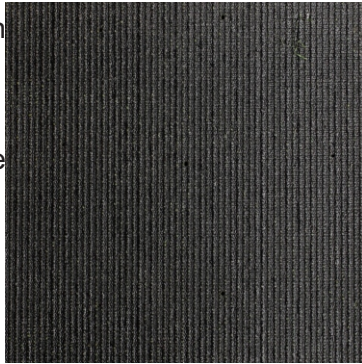


The **EDGEWATER** Putt Turf
by ChiTurf



Face Weight: 50 oz
Total Weight: 70 oz
Pile Height: 1/2"
Yarn: PE Curl
Yarn Color: Olive & Lime Green
Thatch: Texturize PE
Thatch Color: green
Backing: Double Fabric PP
Coating: Double Fabric PU glue
Machine Gauge: 3/16"
Stich: 45 /10cm
Infill: not recommended
Infill Ratio: n/a
Drain Rate: 30" per hour
Full Roll: 15 x 100'
Warranty: 10 years



Flammability Test: Pass *see 27 page report at ChiTurf.com
Lead Test: Pass *see 27 page report at ChiTurf.com
Solar Status: UV resistant
Turf Temp Rating: - 15%
Softness Rating: 2 of 5
Visual Rating: 5 of 5
Intended Use: Fore! Putting greens and high traffic turf locations. Trade shows, display booths. High performance sports applications. Roof decks, backyard, balconies.



"The Edgewater is our putting green turf. It's the perfect blend of ingredients providing one of the highest stimp ratings right off the roll without added infill. Infill is optional but can be used lightly to speed up the green if desired. Super strong high density commercial grade putting green turf product. It's .65" height sets it apart from the field also in that it's the perfect compliment to our other turf grass products which can be added to include the fringe or "rough" surrounding the putting green. This is also a great option for trade shows and display booths where a stable base is required for display item placement in addition to the value added by aesthetic enhancement."

- The ChiTurf Team

